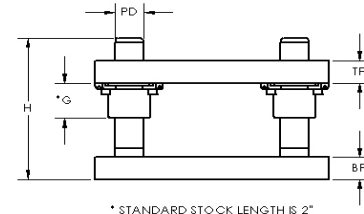
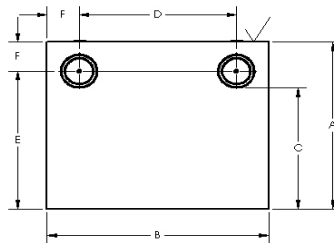
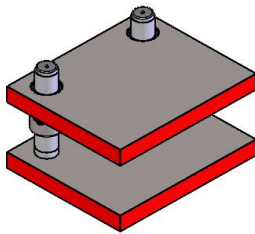


REAR POSITION DIE SETS

Die-sets.com model 2P die sets are available in a two post rear position design, optimizing work space and throat clearance. Available in many other configurations not shown. For die sets not shown please choose your overall dimensions, punch holder and die shoe thickness, guide pin/bushing diameters and length. 2P die sets are stocked without a shank, but are available if needed. Stock die sets ship in 2-3 business days.

Product Features:

- Top and bottom platens made from stress relieved A36 steel
- Blanchard ground flat and parallel within .001" per lineal foot
- Rear edge of top and bottom platens finish milled for ease of additional machining
- Flame cut edges painted red
- Demountable grease filled bushings standard (2" length stock standard)
- Press fit style guide pins standard (specify pin length at time of order in 1" increments)
- Additional bushings lengths available (see chart)
- Ball bushings available upon request
- Shipped unassembled or assembled
- Shanks available upon request



* STANDARD STOCK LENGTH IS 2"

FRONT TO BACK	LEFT TO RIGHT	THICKNESS		DIE SET NUMBER	POST DIA	EDGE TO CLAMP	CENTER TO CENTER	CENTER TO EDGE	BUSHING LENGTH	CENTER TO EDGE	PIN LENGTH	IN STOCK							
		TP	BP										MODEL	PD	C	D	E	G	F
8	8	1-1/4	1-1/4	2P-0808-11	1-1/4	5-3/16	4-3/4	6-3/8	2 OR 3	1-5/8	6-12	✓							
		1-1/4	1-1/2	2P-0808-12								✓							
		1-1/2	1-1/4	2P-0808-21								✓							
		1-1/2	1-1/2	2P-0808-22								✓							
8	10	1-1/4	1-1/4	2P-0810-11	1-1/4	5-3/16	6-3/4	6-3/8	2 OR 3	1-5/8	6-12	✓							
		1-1/4	1-1/2	2P-0810-12								✓							
		1-1/2	1-1/4	2P-0810-21								✓							
		1-1/2	1-1/2	2P-0810-22								✓							
8	12	1-1/4	1-1/4	2P-0812-11	1-1/4	5-3/16	8-3/4	6-3/8	2 OR 3	1-5/8	6-12	✓							
		1-1/4	1-1/2	2P-0812-12								✓							
		1-1/2	1-1/4	2P-0812-21								✓							
		1-1/2	1-1/2	2P-0812-22								✓							
10	10	1-1/4	1-1/4	2P-1010-11	1-1/4	7-3/16	6-3/4	8-3/8	2 OR 3	1-5/8	6-12	✓							
		1-1/4	1-1/2	2P-1010-12								✓							
		1-1/2	1-1/4	2P-1010-21								✓							
		1-1/2	1-1/2	2P-1010-22								✓							
10	12	1-1/4	1-1/4	2P-1012-11	1-1/2	7	8-1/2	8-1/4	2 OR 3	1-3/4	6-12	✓							
		1-1/4	1-1/2	2P-1012-12								✓							
		1-1/2	1-3/4	2P-1012-23								✓							
		1-3/4	1-1/2	2P-1012-32								✓							
10	14	1-1/4	1-1/2	2P-1014-12	1-1/2	7	10-1/2	8-1/4	2 OR 3	1-3/4	6-12	✓							
		1-1/2	1-1/2	2P-1014-22								✓							
		1-1/4	1-1/2	2P-1016-12								1-1/2	7	12-1/2	8-1/4	2 OR 3	1-3/4	6-12	✓
		1-1/2	1-1/2	2P-1016-22															✓
1-1/4	1-1/4	2P-1212-11	1-1/2	9	8-1/2	10-1/4	2 OR 3	1-3/4	6-12	✓									
1-1/4	1-1/2	2P-1212-12								✓									
1-1/4	1-3/4	2P-1212-13								✓									
1-1/4	2	2P-1212-14								✓									
12	12	1-1/2	1-1/2	2P-1212-22	1-1/2	9	8-1/2	10-1/4	2 OR 3	1-3/4	6-12	✓							
		1-1/2	1-3/4	2P-1212-23								✓							
		1-1/2	2	2P-1212-24								✓							
		1-3/4	1-1/2	2P-1212-32								✓							
		1-3/4	1-3/4	2P-1212-33								✓							
		1-3/4	2	2P-1212-34								✓							
		2	1-1/2	2P-1212-42								✓							
		2	1-3/4	2P-1212-43								✓							
		2	2	2P-1212-44								✓							
		1-1/2	1-1/2	2P-1214-22								1-1/2	9	10-1/2	10-1/4	2 OR 3	1-3/4	6-12	✓
		1-1/2	1-3/4	2P-1214-23															✓
		12	16	1-1/2								1-1/2	2P-1216-22	1-1/2	9	12-1/2	10-1/4	2 OR 3	1-3/4
1-1/2	1-3/4			2P-1216-23	✓														
14	14	1-1/2	1-1/2	2P-1414-22	1-1/2	11	10-1/2	12-1/4	2 OR 3	1-3/4	6-12	✓							
		1-1/2	1-3/4	2P-1414-23								✓							
16	20	1-1/2	1-1/2	2P-1620-22	1-1/2	13	16-1/2	14-1/4	2 OR 3	1-3/4	6-12	✓							
		1-1/2	1-3/4	2P-1620-23								✓							
		1-3/4	2	2P-1620-34								✓							